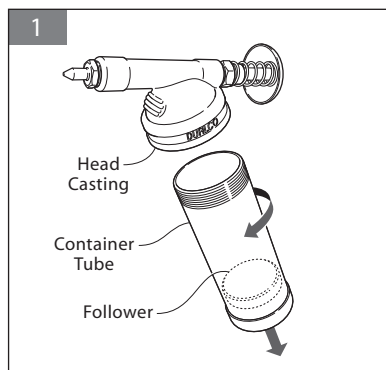


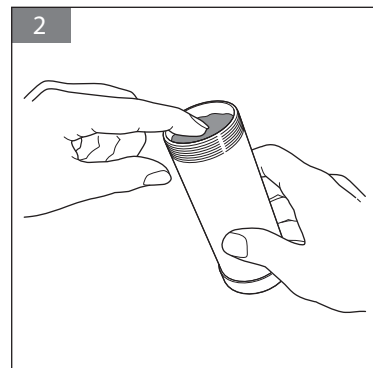
Push Type Utility Grease Gun

Filling Instructions • Caution: Use Clean Lubricant

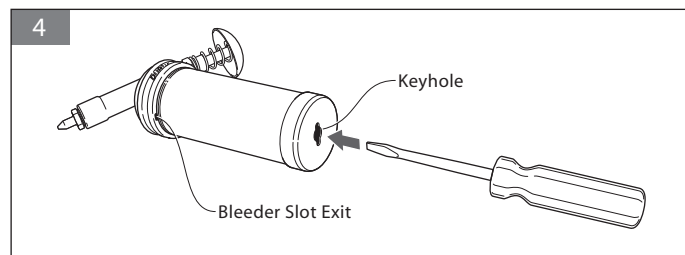
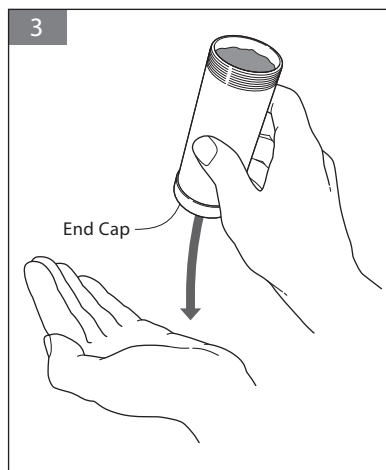
- 1. Unscrew the Container Tube assembly from the Head Casting.



- 2. Pack with fresh, clean lubricant through the open end of the Container Tube assembly. **Apply gradually to eliminate air pockets.**



- 3. Tamp lubricant down solidly in the Container Tube by tapping the closed end lightly against the palm of the hand. Continue to add lubricant until the tube is completely filled and the metal Follower rests against the Container Tube End Cap.

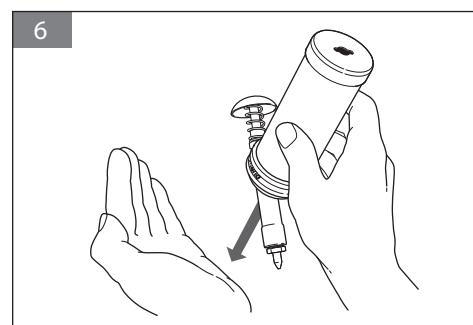
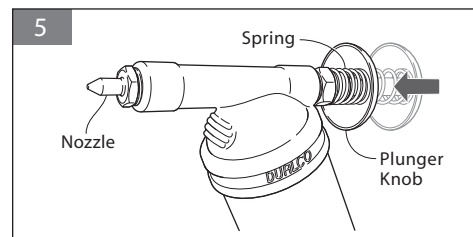


- 4. To prime the grease gun, screw the Container Tube assembly into the Head Casting **almost all the way**. Then insert a screw driver or rod through the "keyholed" tube end cap, exerting pressure against the metal follower. This pressure will expel any trapped air past the tube threads. When lubricant begins to slightly ooze through the **bleeder slot exit**, tighten the Container Tube assembly **securely** into the Head Casting.

Operating Instructions

- 5. Operate by pushing the PLUNGER KNOB forward and allowing the SPRING to return the PLUNGER KNOB for the next stroke.
- Hold NOZZLE firmly against fitting or grease port. Push PLUNGER KNOB forward with rapid, complete strokes until sufficient lubricant has been pumped into service area.
- If the lubricant does not flow from the NOZZLE in a solid stream, it is an indication that either all the air has not been expelled from the CONTAINER TUBE, or foreign particles have lodged beneath the CHECK BALL preventing it from seating.
- REMEDY: Remove NOZZLE from HEAD CASTING, and withdraw CHECK SPRING and CHECK BALL. (See replacement parts diagram) Clean CHECK BALL and SEAT, then replace parts. Invert the GUN and tamp the HEAD CASTING end against the palm of the hand to jar lubricant into the PLUNGER cavity of the HEAD CASTING. (Fig. 6) Refer to Fig. 4 for priming.

NOTE: In order to prevent lubricant leakage, make certain all threaded components are securely tightened, and all parts are present and in good working order.



DUALCO

All Rights Reserved. © Copyright 2021 DUALCO Inc.

DUALCO • 8404 Braniff, Houston, Texas 77061
713-644-1164 • FAX 713-644-7761
www.dualco-inc.com
E-Mail: dualco@dualco-inc.com



Manufacturers of
Professional Lubrication
Equipment since 1960
Made in USA



Model

700231**Push Type
Utility Grease Gun****Replacement Parts****Specifications**

Vacuum Prime

Pump Head Length 4-5/8"

Net Weight 9 oz.

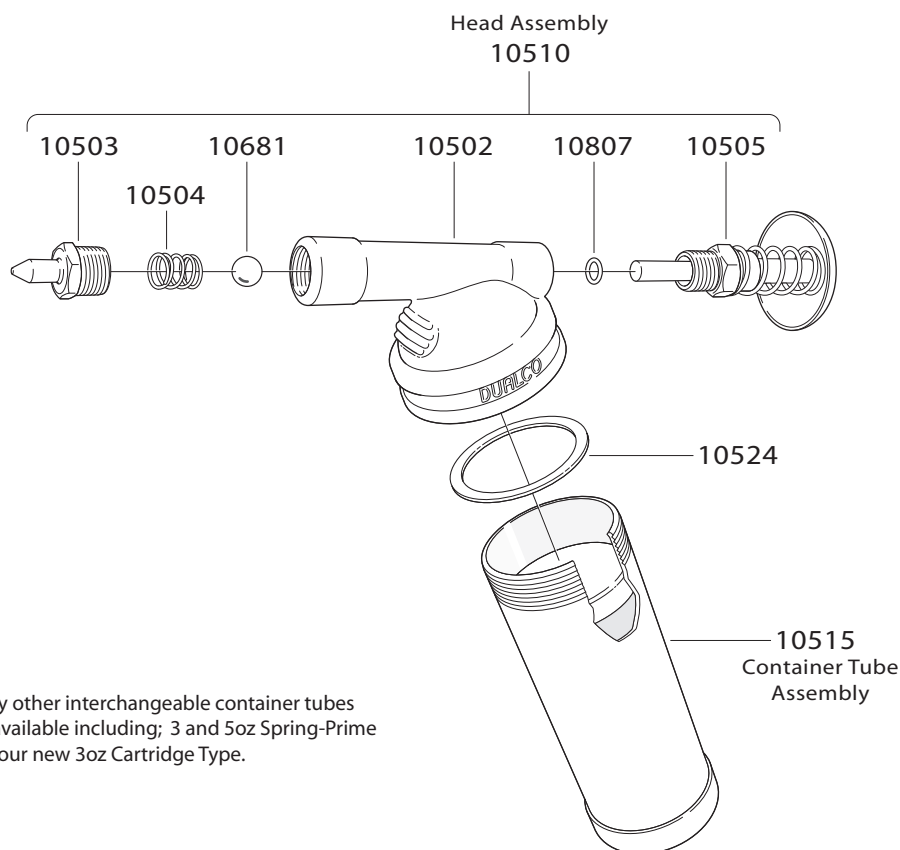
Zinc Plated

3,000 psi Rated

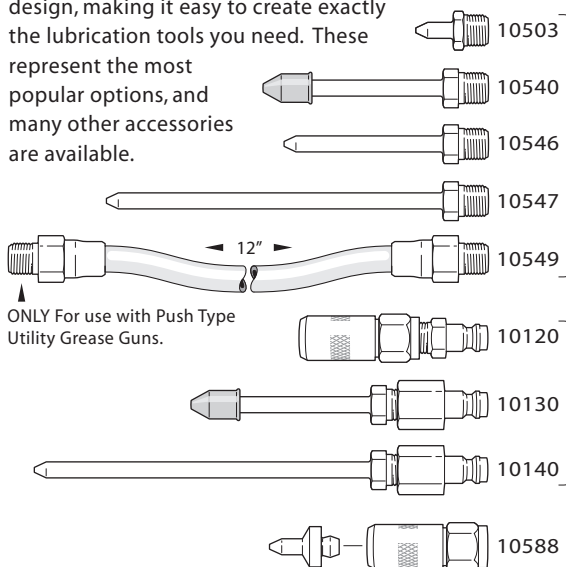
3 oz. Capacity

Parts List

Part No.	Description
10502	Head
10503	Needle Nozzle
10504	Check Spring
10505	Plunger Assembly
10510	Head Assembly
10515	Container Tube Assembly
10524	Head Gasket
10681	Check Ball
10807	"O" Ring

**Optional Parts & Accessories**

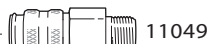
• All of our products are highly modular in design, making it easy to create exactly the lubrication tools you need. These represent the most popular options, and many other accessories are available.



ONLY For use with Push Type Utility Grease Guns.

Standard

Model	Description	Length	Connection
10503	Hardened Needle Tip Nozzle for all flush type grease fittings.	13/16"	1/8" NPT thread
10540	Rubber Tipped Nozzle on Stainless Fitting	2-9/16"	1/8" NPT thread
10546	Narrow Stainless Tip for all flush type grease fittings or hard to reach places	2-1/4"	1/8" NPT thread
10547	Narrow Stainless Tip for all flush type grease fittings or hard to reach places	4-1/2"	1/8" NPT thread
10549	Hose Assembly • Flexible extension for hard to reach places	12"	1/8" NPT thread

Quick Disconnect System

Model	Description	Length	Connection
11049	Quick Disconnect Coupler • For fast tip changes	1-9/16"	1/8" NPT thread
10120	Hydraulic Coupler with 3 Jaw built-in ball check outlet	2-3/8"	Quick Disconnect
10130	Rubber Tipped Nozzle on Stainless Fitting	3-1/2"	Quick Disconnect
10140	Narrow Stainless Tip for all flush type grease fittings or hard to reach places	5-1/2"	Quick Disconnect

Needle/Hydraulic Coupler Combo

10574 Needle Nozzle Adapter + 10548 Hydraulic Coupler
Mounts to grease gun with 10551 Pipe nipple.



Manufacturers of
Professional Lubrication
Equipment since 1960
Made in USA

**DUALCO**

DUALCO • 8404 Braniff, Houston, Texas 77061
713-644-1164 • FAX 713-644-7761
www.dualco-inc.com
E-Mail: dualco@dualco-inc.com

All Rights Reserved. © Copyright 2021 DUALCO Inc.